



GROUND ENGAGING TOOLS



NEW REPLACEMENT PARTS FOR HEAVY EQUIPMENT








CTP Ground Engaging Tools

Side Pin Teeth

Picture	Type	Application	J200	J225	J250	J300	J350	J400	J450/ J460	J550	J600	J700	J800
	Short	For high-impact jobs and pry-out work (such as rock)	1U3201	6Y6221	1U3251	1U3301	1U3351	7T3401	9W8451	9W8551	6I6601		
	Long	For use in most general applications where breakage is not an issue	1U3202	6Y3222	1U3252	1U3302	1U3352	7T3402	9W8452	9W8552	6I6602	4T4702	
	Long Tip	For use in most general applications where breakage is not an issue	1959209		1681253	1681301	1681351	1681401	1681451				
	Heavy Duty Abrasion	Extra metal for longer wear life	4T2203	6Y6223	9N4253	9N4303	9N4353	7T3403	9N4453	6Y2553	6I6603	9U9703	6I8803
	Heavy Duty Long	3 to 5 times more wear life than standard tips		8E4222	9N4252	9N4302	9N4352	8E4402	9N4452	9N4552	7Y0602		
	Heavy Duty Penetration	3 to 5 times more wear life than standard tips				1359300/ 9N4303HD	1441358/ 9N4353HD	1359400/ 7T3403HD	1386451/ 9N4453HD	1386522/ 6Y2553HD	1359600/ 6I6603HD	1359700	
	Penetration	For use in densely compacted material (such as clay)	1U3209	6Y8229	9J4259	9J4309	9J4359	6Y7409	9W8459	9W8559	7I7609	4T4709	
	Penetration Extended	Offers the perfect combination of strength and a prolonged penetration wear life	1U3202V	6Y3222V	1U3252V	1835300/ 1U3302V	1681359/ 1U3352V	1681409/ 7T3402V	1590459/ 9W8452V	1590559/ 9W8552V	1590607		
	Twin Tiger	Use for severe digging in rock and frost	1358208	1358228	1358258	1359308	1359357	1359408	1386458				
	Sharp Center	Applications that require use in densely compacted material such as clay	9W8209		9W8259	9W8309	9W2359	6Y5409	7T8459	9W6559			



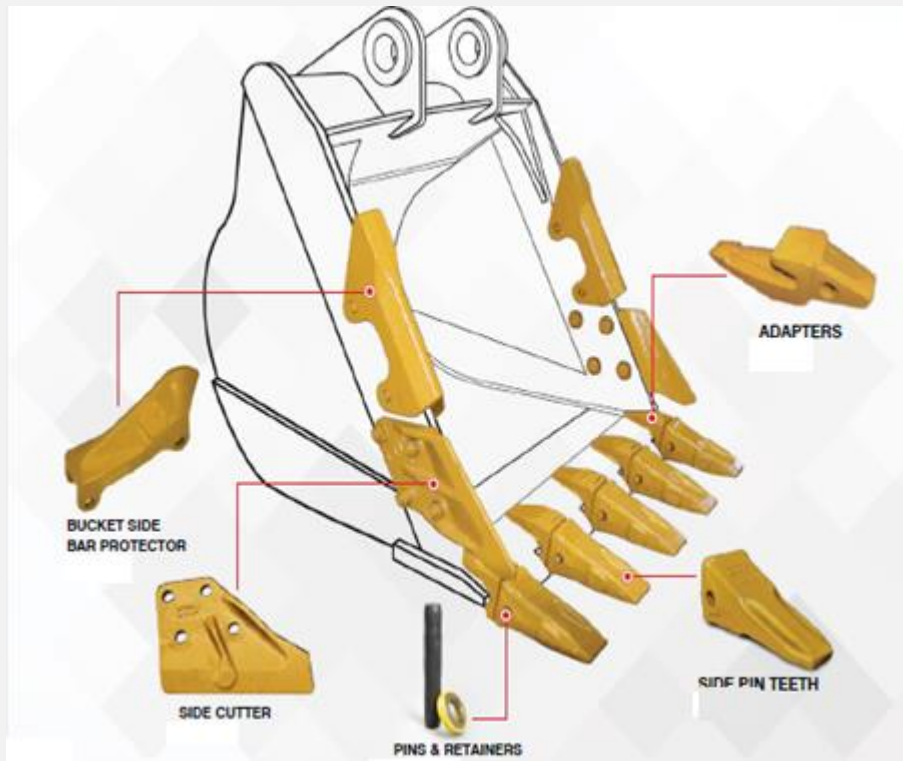
Side Pin Teeth

Picture	Type	Application	J200	J225	J250	J300	J350	J400	J450/ J460	J550	J600	J700	J800
	Flare (Wide)	Applications that require a clean floor.	1099200	1863010	3G8250/ 2085254	4T1300/ 1073300	8J3350/ 1073350	7T3400/ 1073400	8J1450/ 1073450	1073550			
	Standard Pin	Pins are zinc plated to improve on the longevity and prevent corrosion.	8E6208		8E6258	9J2308	8E6358		6Y2527	6Y8558	6I6608		
	Heavy Duty Pin	3 to 5 times more wear life than standard pins.		1324762	1324763	1324766	1140358	1167408	1140468	1073378	1139608	1134708	1341808
	Standard Retainer	Made with the toughest materials to increase wear life.	8E6209		8E6259	8E6259	8E6359		8E6359	8E5559	6I6609		
	Heavy Duty Retainer Assembly	3 to 5 times more wear life than standard retainers.		1495733	1495733	1495733	1140359	1167409	1073469	1078559	1139609	1134709	1341809

Reference Chart

Family	Pocket Size	Machines
J200	20=2.0"	416, 426, 428, 436, 910, 931, 935, 307
J250	25=2.5"	916-930, 936, 941, 943, 951, 953, 205 THRU 214,225,229,311,312,320
J300	30=3.0"	950,953B THRU 966, E180, 215, 235, 205 THRU 214, 315,320,322
J350	35=3.5"	966B, 977, 980, E180, E240, 213B, 215 THRU 229, 320,322,325,330
J400	40=4.0"	980G,322,325,330
J450	45=4.5"	983,988,988B,225,229,E300,235,325,330, 345, 350
J550	55=5.5"	988G, 992, 235, 245, 345, 350, 375
J600	60=6.0"	990, 992
J700	70=7.0"	992, 994
J800	80=8.0"	994





STRENGTH:

The ability to withstand digging and penetrating shocks as well as high breakout forces

PENETRATION:

The ability to penetrate tough material, when it's tightly compacted, rocky or frozen

WEAR LIFE:

The ability to withstand wearing, scouring, and abrasive action of the material being handled



PENETRATION:

- Use in densely compacted material such as clay.
- Gives maximum penetration.
- Self-sharpening.



SHORT:

- Use in high-impact and pry-out work such as rock.
- Extremely strong.



LONG:

- Use in most general applications where breakage is not a problem.
- Extremely strong.



HEAVY DUTY LONG:

- Use in general loading and excavation work.
- Provides extended wear and strength.



HEAVY DUTY ABRASION:

- Use when working in sand, gravel and shot rock.
- Maximum wear material.



HEAVY DUTY LONG:

- Use for better penetration.
- Increased wear life (same as Heavy Duty).



HEAVY DUTY PENETRATION:

- Use in high-impact, hard-to-penetrate material.
- Extended wear life.

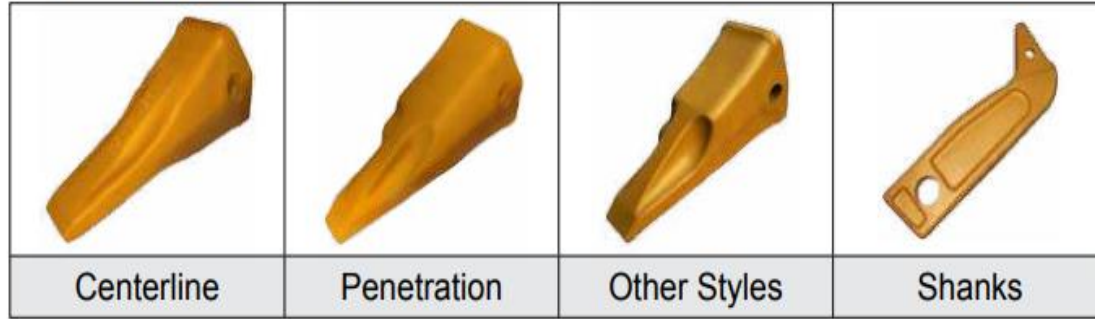


ROCK CHISEL:

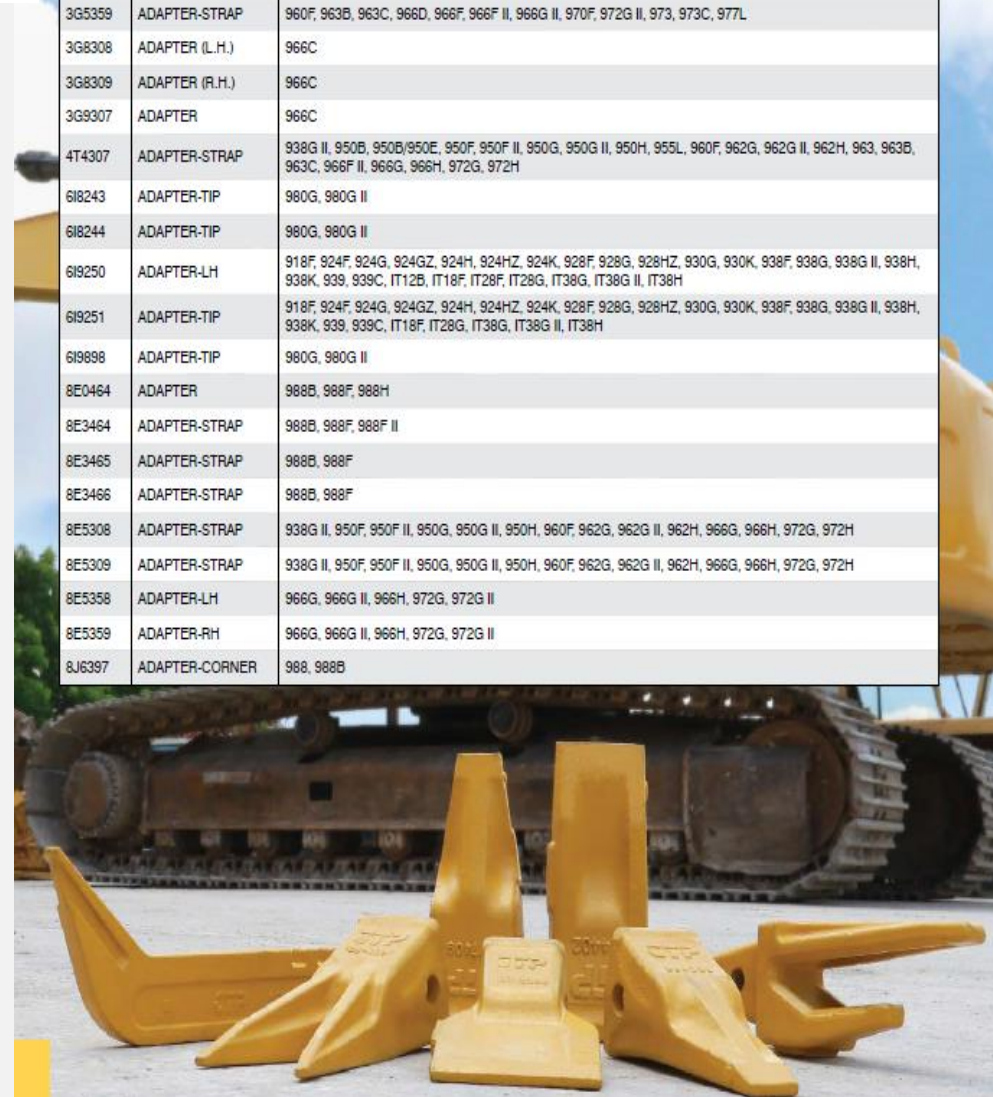
- 3 to 5 times more wear life than standard.



Style Ripper Teeth



Part No.	Description	Application
3G4259	ADAPTER-STRAP	920, 924F, 924G, 924GZ, 926, 936F, 938F, 939, 939C, 953, 953C, G896, IT12B, IT24F, IT28F, IT28G, IT38F
3G4308	ADAPTER-STRAP-LH	950, 950B, 950B/950E, 950F, 950F II, 953B, 953C, 955L, 960F, 963, 963B, 963C, 966F II
3G4309	ADAPTER-STRAP-RH	950, 950B, 950B/950E, 950F, 950F II, 953B, 953C, 955L, 960F, 963, 963B, 963C, 966F II
3G5307	ADAPTER	966C
3G5358	ADAPTER-STRAP	960F, 963B, 963C, 966D, 966F, 966F II, 966G II, 970F, 972G II, 973, 973C, 977L
3G5359	ADAPTER-STRAP	960F, 963B, 963C, 966D, 966F, 966F II, 966G II, 970F, 972G II, 973, 973C, 977L
3G8308	ADAPTER (L.H.)	966C
3G8309	ADAPTER (R.H.)	966C
3G9307	ADAPTER	966C
4T4307	ADAPTER-STRAP	938G II, 950B, 950B/950E, 950F, 950F II, 950G, 950G II, 950H, 955L, 960F, 962G, 962G II, 962H, 963, 963B, 963C, 966F II, 966G, 966H, 972G, 972H
6I8243	ADAPTER-TIP	980G, 980G II
6I8244	ADAPTER-TIP	980G, 980G II
6I8250	ADAPTER-LH	918F, 924F, 924G, 924GZ, 924H, 924HZ, 924K, 928F, 928G, 928HZ, 930G, 930K, 938F, 938G, 938G II, 938H, 938K, 939, 939C, IT12B, IT18F, IT28F, IT28G, IT38G, IT38G II, IT38H
6I8251	ADAPTER-TIP	918F, 924F, 924G, 924GZ, 924H, 924HZ, 924K, 928F, 928G, 928HZ, 930G, 930K, 938F, 938G, 938G II, 938H, 938K, 939, 939C, IT18F, IT28G, IT38G, IT38G II, IT38H
6I8898	ADAPTER-TIP	980G, 980G II
8E0464	ADAPTER	988B, 988F, 988H
8E3464	ADAPTER-STRAP	988B, 988F, 988F II
8E3465	ADAPTER-STRAP	988B, 988F
8E3466	ADAPTER-STRAP	988B, 988F
8E5308	ADAPTER-STRAP	938G II, 950F, 950F II, 950G, 950G II, 950H, 960F, 962G, 962G II, 962H, 966G, 966H, 972G, 972H
8E5309	ADAPTER-STRAP	938G II, 950F, 950F II, 950G, 950G II, 950H, 960F, 962G, 962G II, 962H, 966G, 966H, 972G, 972H
8E5358	ADAPTER-LH	966G, 966G II, 966H, 972G, 972G II
8E5359	ADAPTER-RH	966G, 966G II, 966H, 972G, 972G II
8J6397	ADAPTER-CORNER	988, 988B



Bolt on Center Adapter-2 holes



Provides for a good protection of the blade, used where no smooth finish is required.

Part No.	Family	Bolt	Nut
8E2184	J200	4F3656	4K0367
9J4207	J200	2J4771	2J3506
1U0257	J250	5P8136	8J2933
1U0307	J300	5P8136	8J2933
4T4307	J300	5P8136	8J2933
3G3357	J350	5P8361	5P8362
3G9307	J300	5P8361	5P8362

Bolt on Center Adapter-3 Holes



Used where no smooth finish is required, provides for a good protection of the blade, minimizes the risk of breakage or loss.

Part No.	Family	Bolt	Nut
3G5307	J300	5P8136	8J2933

Flush Mounted Adapters



Recommended where a good penetration is required, easy to clean, flat bucket bottom leaves a smooth finish.

Part No.	Family	Position	Model
4T1204	J200	Center	416, 426, 910, 931, 935
1U1254	J250	Center	930, 936, 943, 951, 953
1U1304	J300	Center	950, 955, 963, 966C
1U1354	J350	Center	966D, 973, 977, 980
8E0464	J460	Center	983, 988
8E0466	J460	Left	983, 988

Weld on Bottom Strap



Good protection of the blade, provides for good excavation.

Part No.	Family
8J7525	J200
3G0169	J250
9J8929	J300
1U1350	J350

Bolt on Corner Adapter




Prevent the edge from scalloping between the teeth. Reduces stress, adding service life in high-wear applications and leaves a cleaner work surface.

Part No.	Family	Position	Bolt	Nut
1U2208	J200	Left	6F0196	2J3505
1U2209	J200	Right	6F0196	2J3505
3G4258	J250	Left	4J9058	8J2933
3G4259	J250	Right	4J9059	8J2934
3G4308	J300	Left	5P8823	5P8362
3G4309	J300	Right	5P8823	5P8362
3G8308	J300	Left	5P8823	5P8362
3G8309	J300	Right	5P8823	5P8362
3G5358	J350	Left	5P8823	5P8362
3G5359	J350	Right	5P8823	5P8362


Shanks and Pins for Motor Graders

Picture	Part No.
	9F5124
	6Y5230
	5B6251
	5K1459
	5K1458

D10N Heavy Duty End Bits

	
Part No.	Position
8E4541	Right
8E4542	Left

Bolt on Monoblock Teeth

	Tip and adapter are one integrated piece for easy installation and lower initial costs.	
Part No.	Bolt	Nut
1358203	4F3657	4K0367
1U1857	8J2928	2J3507
1U1877	8J2928	8J2933
8E1637	1J3527	8J2933